

# ORAL CANCER

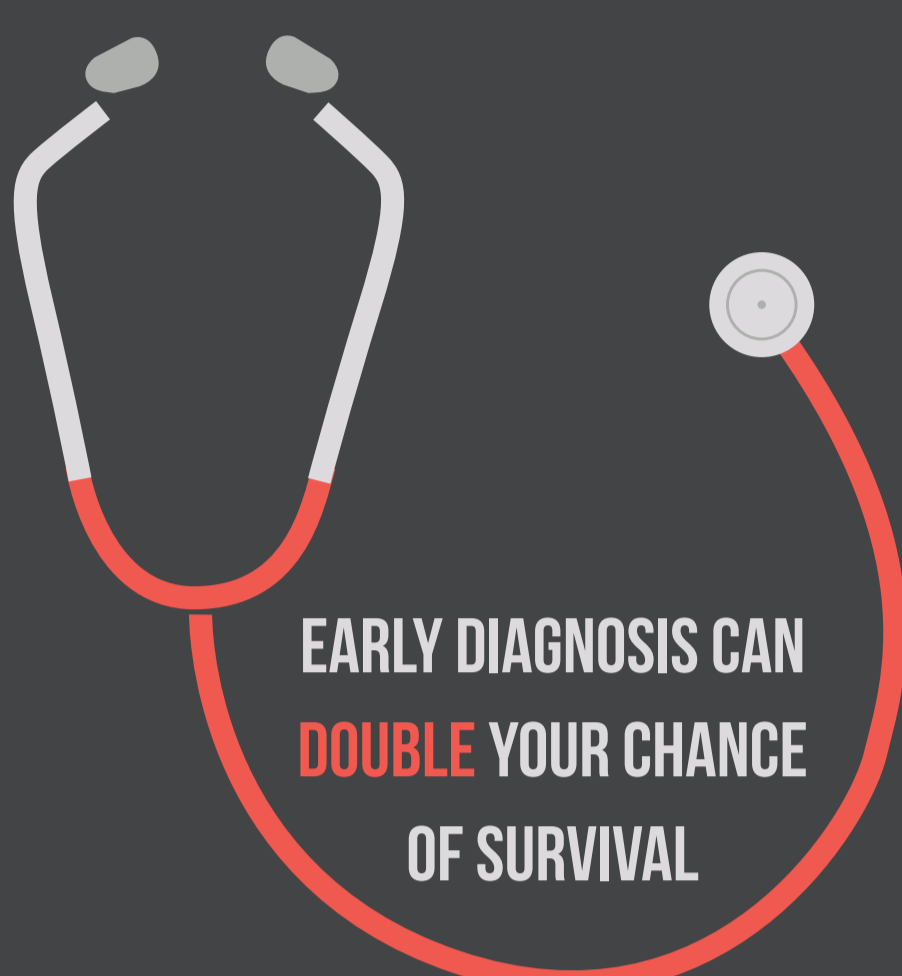
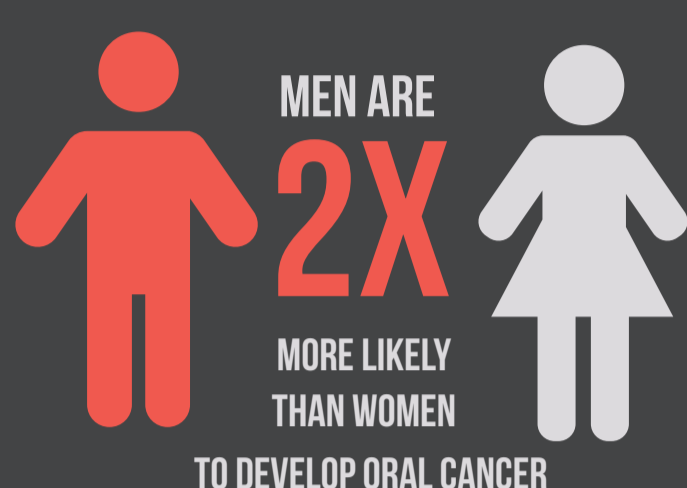


DON'T BE A STATISTIC

8,000

PEOPLE DIE FROM ORAL CANCER EVERY YEAR

ONE AMERICAN DIES EVERY HOUR FROM ORAL CANCER



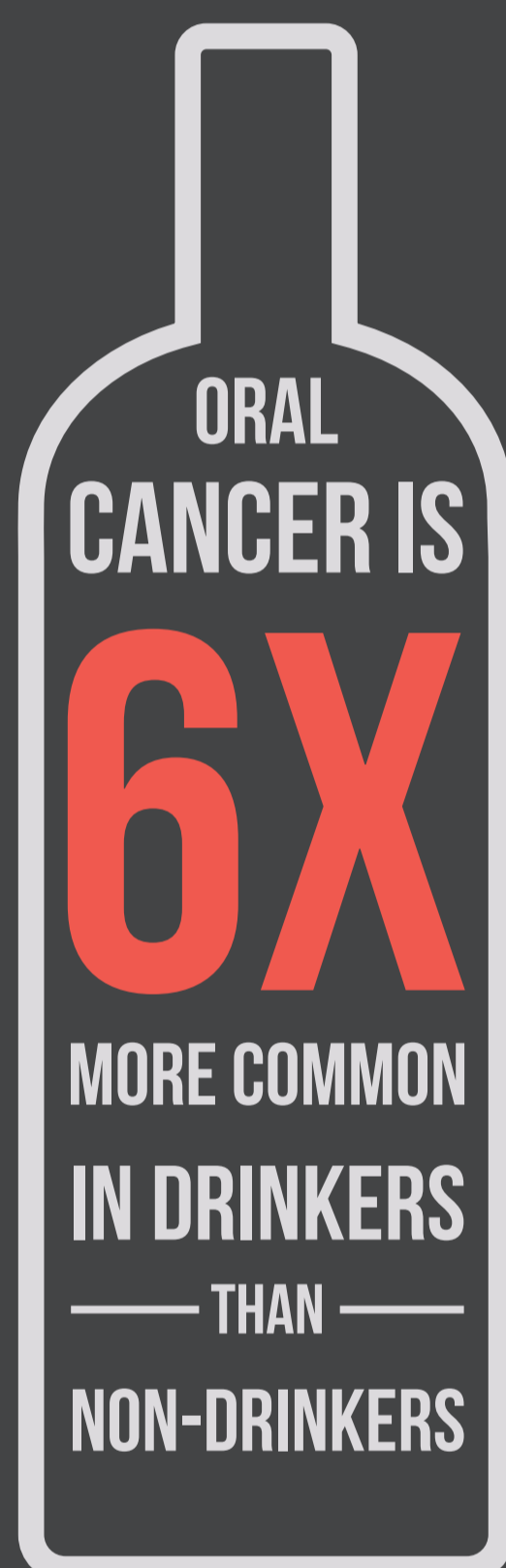
## RISK FACTORS

25% OF ORAL CANCER PATIENTS HAVE NO RISK FACTORS

SMOKERS ARE **SIX TIMES** MORE LIKELY TO DEVELOP ORAL CANCER THAN NON-SMOKERS



ORAL CANCER IS **6X** MORE COMMON IN DRINKERS THAN NON-DRINKERS



EXCESSIVE

SUN

EXPOSURE

## SIGNS OF ORAL CANCER

SWELLING, THICKENING, LUMPS, ROUGH SPOTS, CRUSTING, OR EROSION

DIFFICULTY CHEWING, SWALLOWING, SPEAKING, OR MOVING THE JAW OR TONGUE

VELVETY WHITE, RED, OR SPECKLED PATCHES

HOARSENESS, CHRONIC SORE THROAT, CHANGE IN VOICE

NUMBNESS OR LOSS OF FEELING

CAN BE FOUND ON THE LIPS, CHEEKS, TONGUE, GUMS, THROAT, OR ANY SURFACE OF THE MOUTH

UNEXPLAINED BLEEDING

PAIN OR TENDERNESS

PERSISTENT SORES

EAR PAIN

